

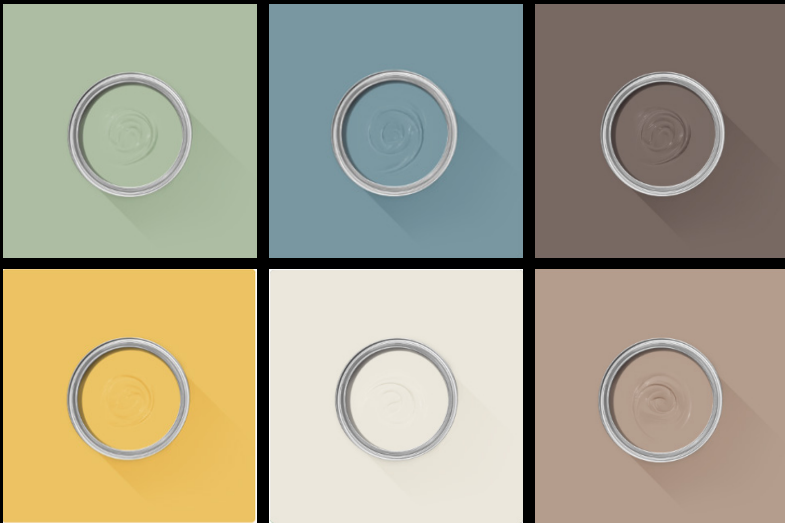
lawrence project

CONCEPT

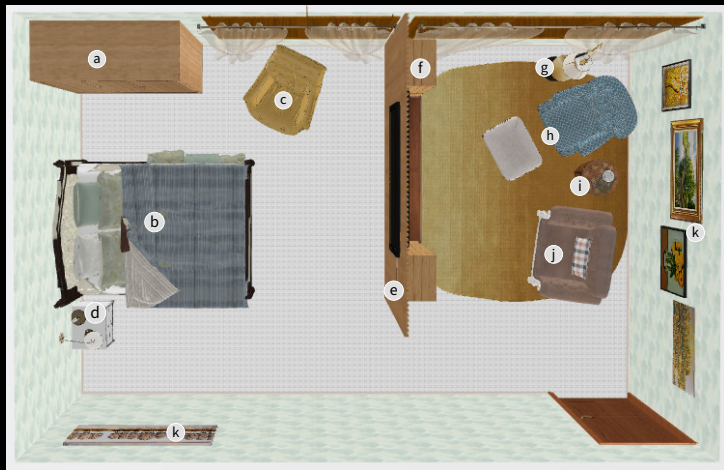


The concept for Susan's suite is to create a warm, inviting, and comfortable private retreat. With carpeted floors to prevent from any slips or falls. The room will open to the sitting room that will allow Susan space to unwind, entertain guests and enjoy activities she love. Plush upholstered chairs and ottomans will maximize comfort and the option of a recliner enables Susan to relax in her favorite position. Ample lighting near seating will accommodate tasks and reading. The decor will coordinate with the bedroom but feel a bit brighter and lively, with accessories in cheerful colors adding a uplifting touch. The adjoining bedroom will have an overall traditional design aesthetic with furnishings like a quilted bed, natural woods, and wardrobe to evoke a cozy, homey feel. Soothing neutral colors, natural textiles, and artwork depicting serene landscapes will promote relaxation and rest. Task and accent lighting will ensure Susan can easily navigate the space with the wall lamp.





bright
warm
welcoming



KEY

- Ⓐ wardrobe
- Ⓑ queen bed
- Ⓒ oversized chair
- Ⓓ nightstand | wall lamp
- Ⓔ wall divider
- Ⓕ bookshelves
- Ⓖ standing lamp
- Ⓗ chair | ottoman
- Ⓘ side table
- Ⓙ recliner chair
- Ⓚ wall art



BEDROOM



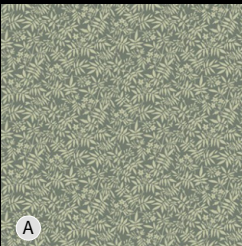
SITTING ROOM

lawrence project **PERSPECTIVE**

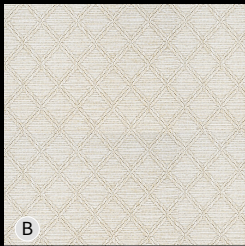
EJ

emma jackson

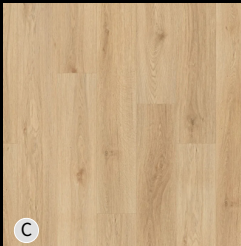
ID



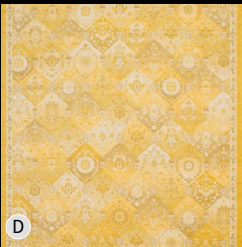
A



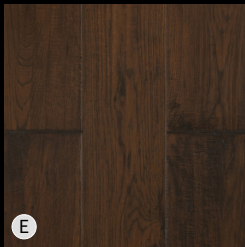
B



C



D



E

KEY

- Ⓐ wallpaper
- Ⓑ carpet
- Ⓒ wardrobe | divider
- Ⓓ sitting room rug
- Ⓔ frame | table | drawers



\$990



\$5600



\$39000

recliners



\$540



\$695



\$798



\$1596



\$438



\$820



\$1258



\$1461



Copyright 2023 Emma Jackson. All rights reserved. No part of this may be reproduced or transmitted in any form or by any means, electronic or mechanical, including photocopying, recording, or by any information storage and retrieval system, without express written permission from the author.